

## Athens Series



**8371**

Standard mounting center lengths: 12", 16", 18"

**Standard finishes:** 605, 613, 619, 625, 626, 630



**Complements**

Athens/07 lever



■ VON DUPRIN

## Addison Series



**8371**

Standard mounting center lengths: 12", 16", 18"

**Standard finishes:** 605, 613, 619, 625, 626, 630



**Complements**

Addison rose



## Brookshire Series



**8373**

Standard mounting center lengths: 12", 16", 18"

**Standard finishes:** 605, 613, 619, 625, 626, 630



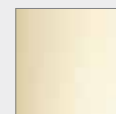
**Complements**

Brookshire rose



## Finishes

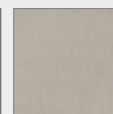
Warm tone finishes



605  
Bright brass



613  
Dark bronze



619  
Satin nickel

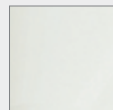
Cool tone finishes



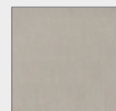
625  
Bright chrome



626  
Satin chrome



629  
Bright  
stainless steel



629  
Satin stainless  
steel

## Available mounting schemes

**Standard** – Thru Bolt

**H-I-L** – Concealed reinforced hollow metal door

**J/N** – Wood or metal door back to back

**O** – Decorative blind thru bolt

**P** – ½" glass door back to back

**NS** – Standard push pull mounting

**NO** – Concealed push pull mounting

## How to order

### Pulls

Model	Length	Finish	Special mounting
8169	10	605	P

### Hooks

Model	Finish
506	605