

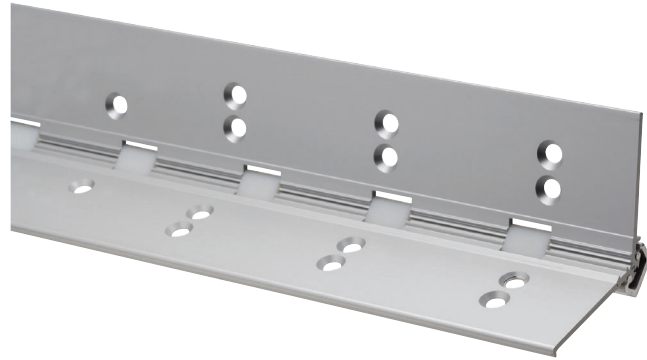
## Hinges and pivots

### Aluminum geared continuous hinges

# 224HD

#### Full mortise - door edge protector

- For 1<sup>3</sup>/<sub>4</sub>" doors
- Door edge protector
- Spread bearing design
- Non-handed for custom cut lengths
- 1/16" Door Inset
- 48" Maximum door width
- Beveled or square edge doors
- For doors weighing up to 450 pounds without reinforcing, 600 pounds with reinforcing



#### Specifications

Standard length	83", 85", 95", 120"
Standard mounting	12-24 x 3/4" Steel self drilling/self tapping Phillips-head screw hardware
Certifications	<ul style="list-style-type: none"><li>▪ Exceeds Grade 1 ANSI/BHMA 156.26 for 150lbs</li><li>▪ UL10C listed (90 min)</li></ul>

#### Options

EPT	Electric power transfer
-----	-------------------------

#### Optional mounting hardware

SECHM	Security screws - hollow metal door and frame
SECWDHM	Security screws - 1/2 wood, 1/2 hollow metal
SECWDWD	Security screws - wood door and frame
TEKSWD	1/2 Self drill, self tap 1/2 wood
TF	Thread forming screws
WD	Wood door and frame

#### Finishes

BHMA	Description	Substrate	Finish
628	Clear Aluminum Anodized	Aluminum	US28
710	Dark Bronze Anodized	Aluminum	313AN
711	Black Anodized	Aluminum	315AN

Custom anodizing and painting are available, consult factory

224HD – spread bearing design



#### For single door applications:

For pairs of doors see chart and general information.

