

A
Hinges & Pivots

B
Pulls & Plates

C
Flush Bolts & Coordinators

D16
Latches, Catches & Bolts

E
Stops

F
Exterior Hardware

G
Miscellaneous Hardware



Meets ANSI/BHMA A156.9 B23013.

345 Adjustable Ball Catch

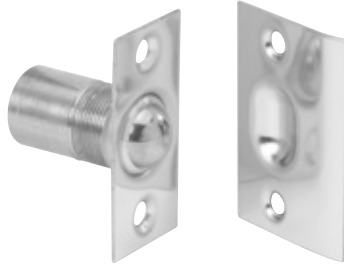
- Ideal for cabinets and small interior doors.
- Free rolling ball insures smooth, positive and trouble-free action.
- Adjustable threaded barrel compensates for various door clearances.
- Adjustable spring tension.
- Made from wrought brass.

Dimensions

Face Plate: 3/4" Wide x 1-1/2" High
 Bore: 1" Deep x 9/16" Diameter
 Strike: 25/32" Wide x 1-1/2" High, Lip to center- 13/32"

Finishes *brass*

Ives Number	B3	B5	B10	B10B	B15	B26	B26D
BHMA	605	609	612	613	619	625	626



Meets ANSI/BHMA A156.9 B23013.

347 Dual Adjustable Ball Catch

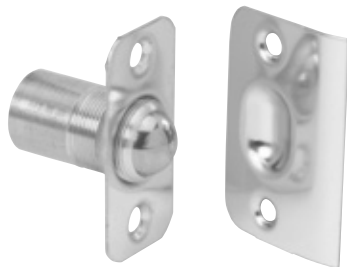
- For catch in door installations.
- Dual adjustment for door clearance and holding strength.
- Lip strike is designed for use where strike is mounted in jamb.
- Free rolling ball insures smooth, positive and trouble-free action.
- Adjustable threaded barrel compensates for various door clearances.
- Adjustable spring tension.
- Made from wrought brass.

Dimensions

Face Plate: 1" Wide x 2-1/8" High
 Bore: 7/8" Diameter x 1-3/8" Deep
 Strike: 1-3/8" Wide x 2-1/8" High, Lip to center- 7/8"

Finishes *brass*

Ives Number	B3	B4	B5	B10	B10B	B15	B26	B26D
BHMA	605	606	609	612	613	619	625	626



Meets ANSI/BHMA A156.9 B23013.

349 Ball Catch

- For catch in door installations.
- Radiused corners allow easy installation with a router.
- Dual adjustment for door clearance and holding strength.
- Lip strike is designed for use where strike is mounted in jamb.
- Free rolling ball insures smooth, positive and trouble-free action.
- Adjustable threaded barrel compensates for various door clearances.
- Adjustable spring tension.
- Made from wrought brass.

Dimensions

Face Plate: 1" Wide x 2-1/8" High
 Bore: 7/8" Diameter x 1-3/8" Deep
 Strike: 1-3/8" Wide x 2-1/8" High, Lip to center- 7/8"

Finishes *brass*

Ives Number	B3	B4	B5	B10	B10B	B15	B26	B26D	B716
BHMA	605	606	609	612	613	619	625	626	