

Meets ANSI/BHMA A156.9 B83071.

330 Roller Catch

- Independent rollers allow positive action and self-alignment.
- Cushioned rollers absorb shock and noise, hold door away from cabinet.
- Application allows for easy adjustment.
- Made from wrought steel.
- Packed with screws and brads.

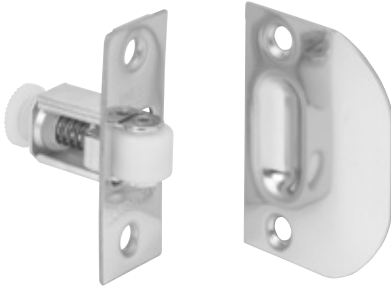
Dimensions

Case: 1-1/4" High x 11/16" Wide

Strike: 1-1/4" High x 3/8" Wide

Finishes

Ives Number	F2C
BHMA	603



Meets ANSI/BHMA A156.16 L27081 for brass and L87081 for steel.

335 Roller Catch

- Smooth, positive latching action insured by powerful conical spring.
- Durable nylon roller insures quiet operation.
- Adjustable tension. Adjustments can be varied from 4 to 17 lbs. of holding power making possible a wide range of door performance.
- Easily installed on thin doors.
- Full lip style strike designed for simplified mortising.
- Made from wrought brass or wrought steel.
- Packed with sheet metal screws.

Dimensions

Face Plate: 7/8" Wide x 2-1/4" High

Bore: 1-3/4" Deep x 13/16" Diameter

Strike: 1-5/8" Wide x 2-1/4" High, Lip to center- 1-3/16"

Finishes

Ives Number	B3	B5	B10	B10B	B15	B26	B26D
BHMA	605	609	612	613	619	625	626

336 Roller Catch

- Smooth, positive latching action insured by powerful conical spring.
- Durable nylon roller insures quiet operation.
- Adjustable tension. Adjustments can be varied from 4 to 17 lbs. of holding power making possible a wide range of door performance.
- Easily installed on thin doors.
- Standard box type strike designed for neat appearance.
- Made from wrought brass or wrought steel.
- Packed with sheet metal screws.

Dimensions

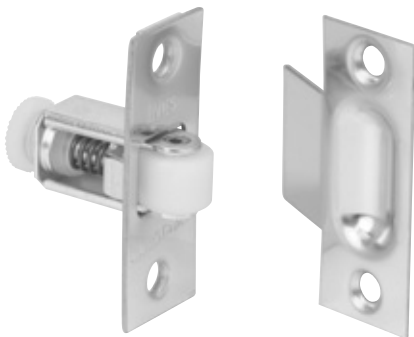
Face Plate: 7/8" Wide x 2-1/4" High

Bore: 13/16" Diameter x 1-3/4" Deep

Strike: 7/8" Wide x 2-1/4" High, Lip to center- 1-1/8"

Finishes

Ives Number	B3	B4	B5	B10	B10B	B15	B26	B26D
BHMA	605	606	609	612	613	619	625	626



Meets ANSI/BHMA A156.16 L27081 for brass and L87801 for steel.

A
Hinges & Pivots

B
Pulls & Plates

C
Flush Bolts & Coordinators

D15
Latches, Catches & Bolts

E
Stops

F
Exterior Hardware

G
Miscellaneous Hardware