

**A**  
Hinges & pivots

**B36**  
Pulls & plates

**C**  
Flush bolts & coordinators

**D**  
Latches, catches & bolts

**E**  
Stops

**F**  
Exterior hardware

**G**  
Miscellaneous hardware



### 8848 Latitude straight solid door pull

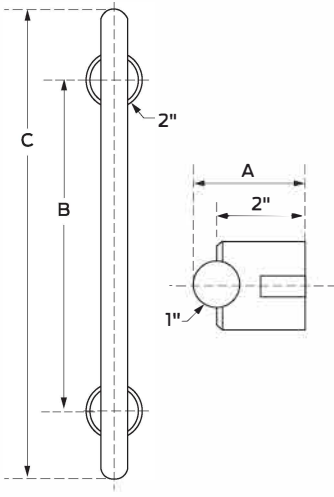
1" Round pull with 2" Round black mounting posts  
Available sizes: 12"

#### Certifications

Meets ANSI A156.06

#### Mounting

- Heavy duty mounting hardware exceeds industry standards
- 3/8-16 mounting hardware
- Specify door thickness. Standard mounting hardware for door thickness of 1-1/2" to 1-3/4" unless otherwise specified. Accessory package available for 2" and 2-1/4" thick doors.
- Comes standard with thru-bolt screws and decorative washers.
- Optional mounting hardware available (see general information section for details) A, F, I, L, N, O, P, Q, X
- Mounting hardware for other door thicknesses are available as engineering special, consult customer service.



Product number	Projection "A"	Clearance	Center to center "B"	Overall length "C"
8848-2	2-1/2"	1-1/2"	12"	17"

#### Finishes

- Available in Brass and Stainless Steel substrates. See general information section for specific BHMA finish code, finish description, US finish code, and substrate information.
- Standard finishes available; 605, 613, 619, 625, 626, 630, 643e/716, BLK
- Custom finishes are available as engineering special, consult customer service.

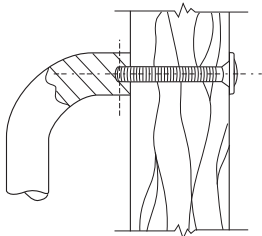
#### Additional information

- Specify PR when ordering a set of pulls for back to back mounting
- For one back to back machined pull, specify Nsgl or Psgl (glass doors)
- Custom lengths are available as engineering special, consult customer service.

**Mounting sizes**

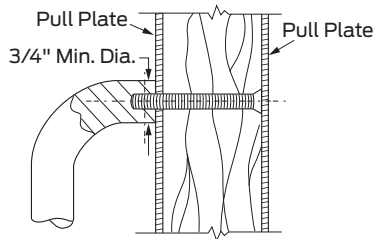
- All mounting hardware is for standard 1-3/4" door.
- Optional mounting hardware for 2" and 2-1/4" doors for many pulls. See pull detail for availability.
- Other mounting hardware sizes available as engineering special. Consult Customer Service.

**Thru-bolt mounts**



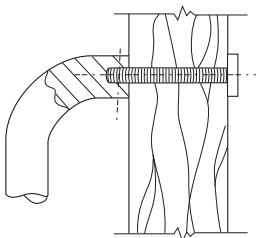
**Standard mount**

- Standard thru-bolt mount with countersunk washers
  - Hollow metal and wood door applications
- (2) Flat head mounting screws, plated to match
- (2) Countersunk washers, plated to match



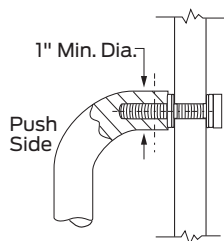
**F Mount - Countersunk holes**

- Used with countersunk holes in doors
  - Wood door applications
- (2) Flat head mounting screws, plated to match



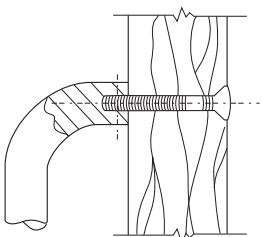
**O Mount - Decorative**

- Decorative thru-bolt mount
  - Hollow metal and wood door applications
- (2) Decorative mounting bolts - machine screw, plated to match



**Q Mount - Decorative, glass doors**

- Decorative thru-bolt mount
  - Glass door applications
- (2) Decorative mounting bolts - machine screw, plated to match
- (2) Metal and vinyl washers



**X Mount - Security**

- Security thru-bolt mount with countersunk washers
  - Hollow metal and wood door applications
- (2) Flat head security pin in socket mounting screws, plated to match
- (2) Countersunk washers, plated to match

Hinges & pivots **A**

Pulls & plates **B5**

Flush bolts & coordinators **C**

Latches, catches & bolts **D**

Stops **E**

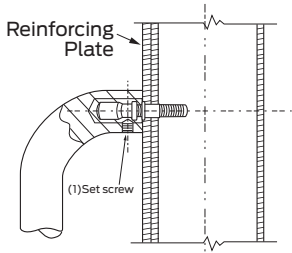
Exterior hardware **F**

Miscellaneous hardware **G**

## Mounting sizes

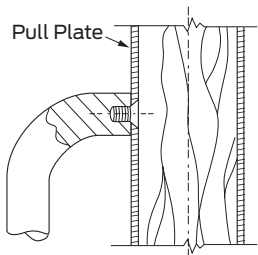
- All mounting hardware is for standard 1-3/4" door.
- Optional mounting hardware for 2" and 2-1/4" doors for many pulls. See pull detail for availability.
- Other mounting hardware sizes available as engineering special. Consult Customer Service.

## Concealed mounts



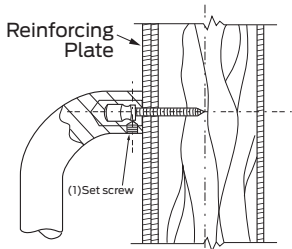
### A Mount - Aluminum doors

- Concealed mount
  - Aluminum door applications
- (2) Mounting bolts - machine screw
- (2) Set screws
- Designed to be used with rivet nuts. Not supplied.



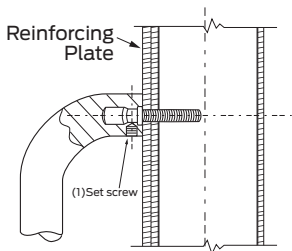
### G Mount - Pull plate

- Concealed mount with pull plate
  - Hollow metal and wood door applications
- Pull mounts directly onto plate, Plate is attached to door
- (2) Flat head mounting screws



### I Mount - Wood doors

- Concealed mount
  - Wood door applications
- (2) Mounting bolts - machine screw
- (2) Set screws



### L Mount - Hollow metal doors

- Concealed mount
  - Hollow metal door applications
- (2) Mounting bolts - machine screw
- (2) Set screws