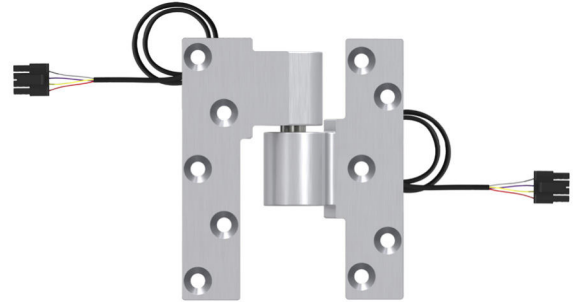


7215PT-7226PT-7227PT INT / 7215FPT-7226FPT-7227FPT INT

3/4" Offset power transfer intermediate pivot (fire and non-fire rated models)

- 7215PT-7226PT-7227PT intermediate pivot is used with 7215, 7226, and 7227 offset pivots
- 7215FPT-7226FPT-7227FPT intermediate pivot is used with 7215F, 7226F, 7227F offset pivots; fire rated
- Non-load bearing
- 28 gauge wire, available in TW4 or TW8 configurations. For other wiring configurations, contact product support.
- Rated 50 VDC or VAC @ 3.5 amps. Continuous or 16 amp pu maximum pulse 400 milliseconds
- Recommended for use with 1 3/4" minimum door thickness, with 1/8" bevel in 2"
- Handed LH or RH



Specifications

Material substrate	<ul style="list-style-type: none"> ▪ 7215PT-7226PT-7227PT - Offered in brass substrate ▪ 7215FPT-7226FPT-7227FPT - Offered in stainless steel
Certifications	<ul style="list-style-type: none"> ▪ 7215PT-7226PT-7227PT - UL10C Listed (20 min) ▪ 7215FPT-7226FPT-7227FPT - UL10C Listed (3 hour) ▪ Meets UL 634 7215PT-7226PT-7227PT - UL10C Listed (20 min) ▪ 7215FPT-7226FPT-7227FPT - UL10C Listed (3 hour) ▪ Meets UL 634

7215PT-7226PT-7227PT INT Finishes

BHMA	Description	Substrate	Finish
605	Bright brass	Brass	US3
606	Satin brass	Brass	US4
612	Satin bronze	Brass	US10
613	Oil rubbed bronze	Brass	US10B
619	Satin nickel	Brass	US15
622	Matte black	Brass	BLK
625	Bright chrome	Brass	625
626	Satin chrome	Brass	626
-	Aged bronze	Brass	643e/716
689	Aluminum painted	Brass	SP28
691	Bronze painted	Brass	SP10
695	Dark bronze painted	Brass	SP313/US10BE
706	Brass painted	Brass	SP4

For other colors, consult factory.

7215FPT-7226FPT-7227FPT INT Finishes

BHMA	Description	Substrate	Finish
629	Polished stainless steel	Steel	US32
630	Satin stainless steel	Steel	US32D
631	Matte black	Steel	F-BLK
632	Bright brass	Steel	US3
639	Satin bronze plated	Steel	US10
-	Aged bronze	Steel	643e/716
689	Aluminum painted	Steel	SP28
691	Bronze painted	Steel	SP10
695	Dark bronze painted	Steel	SP313/US10BE
706	Brass painted	Steel	SP4

For other colors, consult factory.