

330 Roller catch

- Most economical solution recommended for low frequency opening applications
- Independent rollers allow positive action and self-alignment
- Cushioned rollers absorb shock and noise, hold door away from cabinet
- Application allows for easy adjustment
- Packed with screws and brads

Certifications

- Meets ANSI/BHMA A156.9, B83071

Dimensions

- Case: 1-1/4" high x 11/16" wide
- Strike: 1-1/4" high x 3/8" wide

Material substrate

- Made from wrought steel

Finishes

BHMA	Description	Substrate	Finish
604	Clear zinc	Steel	F2C

For other colors, consult factory.



335 Roller catch

- Recommended for higher frequency opening applications
- Smooth, positive latching action insured by powerful conical spring
- Durable nylon roller insures quiet operation
- Adjustable tension. Adjustments can be varied from 4 to 17 lbs. of holding power making possible a wide range of door performance
- Easily installed on thin doors
- Full lip style strike designed for simplified mortising
- Packed with sheet metal screws

Certifications

- Meets ANSI/BHMA A156.16, L27081 for brass and L87081 for steel

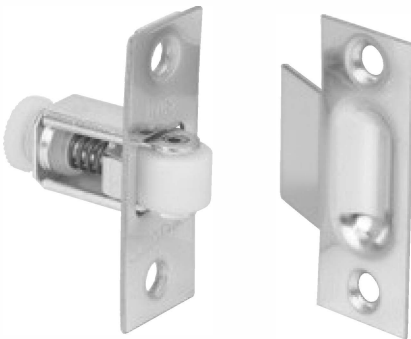
Dimensions

- Face plate: 7/8" wide x 2-1/4" high
- Bore: 1-3/4" deep x 13/16" diameter
- Strike: 1-5/8" wide x 2-1/4" high, lip to center- 1-3/16"

Material substrate

- Made from wrought brass

See finishes below



336 Roller catch

- Recommended for higher frequency opening applications
- Smooth, positive latching action insured by powerful conical spring
- Durable nylon roller insures quiet operation
- Adjustable tension. Adjustments can be varied from 4 to 17 lbs of holding power making possible a wide range of door performance
- Easily installed on thin doors
- Standard box type strike designed for neat appearance
- Packed with sheet metal screws

Certifications

- Meets ANSI/BHMA A156.16, L27081 for brass and L87081 for steel

Dimensions

- Face plate: 7/8" wide x 2-1/4" high
- Bore: 13/16" diameter x 1-3/4" deep
- Strike: 7/8" wide x 2-1/4" high, lip to center- 1-1/8"

Material substrate

- Made from wrought brass

See finishes below

335 and 336 Finishes

BHMA	Description	Substrate	Finish
605	Bright brass	Brass	B3
606	Satin brass	Brass	B4
609	Blackened brass	Brass	B5
612	Satin bronze	Brass	B10
613	Oil rubbed bronze	Brass	B10B
619	Satin nickel	Brass	B15
625	Bright chrome	Brass	B26
626	Satin chrome	Brass	B26D
643e/716	Aged bronze	Brass	643e/716
622	Matte black	Brass	BLK

For other colors, consult factory.

Hinges & pivots

A

Pulls & plates

B

Flush bolts & coordinators

C

Latches, catches & bolts

D15

Stops

E

Exterior hardware

F

Miscellaneous hardware

G